

## Violin III

## Requiem in D Minor K.626

Wolfgang Amadeus Mozart  
Arrangement ZZH

Version 1.2

I. Introitus Kyrie  
Adagio.

1

*p*

Tromb.

8 TUTTI.

Re - qui-emae-ter - nam do-na e - is, Do-mi-ne, re - qui-emae

13 ter - nam do-na e-is, Do-mi-ne. et lux per-pe-tu et lux per-pe-tu-a lu-ce-at, *p*

18 *p*

lu - ce-at e - is.

23

26 *f*

28

30 *p*

33 *f*

Do - na, do - na e - is, Do-mi-ne, do - na,

37

do-na e - is re - qui-emae-ter - nam, do-na e - is, Do-mi-ne, do - na

41

e - is, do-na e - is, do - na, et lux per - pe - tu - a, et lux per - pe - tu - a lu - ce - at

46

*p*

e - is, et lux per - pe - tu - a lu - ce - at e - is.

49

**Allegro.**  
38

1 4

96

Ky - ri e e - le - i - son!

## II. Dies Irae

101 TUTTI.

Di - es i - rae, di - es il - la, sol - vet sae - clum in fa - vil - la, te - ste Da - vid cum Sy -

108

- bil - la. tus, quan - tus, tu - rus, quan - do Ju - dex est ven - tu - rus

116

cun - cta stri - cte dis - cus - su - rus.

121

Di - es i - rae, di - es il - la sol - vet sae - clum in fa -

127

- vil - la, te - ste Da - vid cum Sy - bil - la.

131

## III. Tuba Mirum

169

39

Quid sum, mi - sertunc di - ctu - rus? quem pa-

- tro - numro - ga - tu - rus, cum vix ju - stus, ju - stus, sit se -

*sotto voce* - cu - rus? Cum vix ju - stus, ju - stus sit se - cu - rus, cum vix

ju - stus, vix ju - stus sit se - cu - rus?

## IV. Sequentia: Rex Tremendae

231

Grave

*f* Rex, Rex, Rex, Rex tre-men-daema-je-

-sta-tis, Rex tre-men - daema - je - sta - tis, Rex tre-men - daema - je - sta -

-tis, Rex tre-men-daema - je - sta-tis, qui sal-van-dos sal-vasgra-tis,

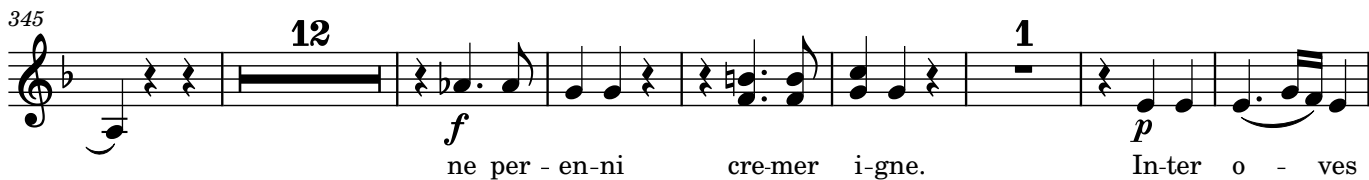
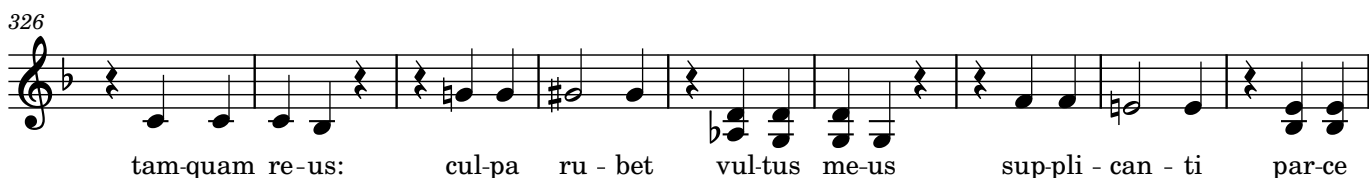
Rex tre-men-daema - je - sta-tis, qui sal-van-dos sal-vas gra-tis, Sal-va me,

Sal - va me, fons pi - e - ta - tis!

253

## V. Sequentia Recordare

14





## VII. Sequentia: Lacrimosa

423 *p*

426

429 *cresc.*  
*f* *p*

432 *f*

435 *p*

438

441 *f*

444

447

450

Detailed description: This page contains the musical score for the 'Lacrimosa' section of the VII. Sequentia. It consists of ten staves of music, numbered 423 to 450. The music is written in a single treble clef with a key signature of one flat (B-flat) and a time signature of 12/8. The notation includes various rhythmic values such as eighth and sixteenth notes, often beamed together, and rests. Dynamic markings are used throughout: 'p' (piano) at measures 423, 429, 435, and 438; 'f' (forte) at measures 429, 432, and 441; and 'cresc.' (crescendo) at measure 429. The piece concludes at measure 450 with a final whole note chord and a double bar line.