

# Aria mit verschiedenen Veränderungen

## Goldberg - Variationen

Cello

J. S. Bach - BWV 988

Arranged by Federico Sarudiansky

### Aria



### Variatio 1



Version 1.0. (2010/01/31)

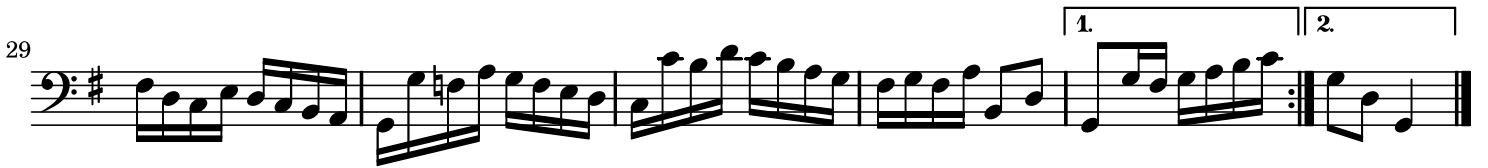
Copyright 2010 © Federico Sarudiansky

Licensed under a Creative Commons Attribution Share-Alike 3.0 licence

(<http://creativecommons.org/licenses/by-sa/3.0>)

Please communicate any performances, rehearsals, comments, suggestions, etc. to **fsarud at yahoo dot com**. If some public performance is going to take place, please send me a copy of a concert program by email or regular mail.

Variatio 2



Variatio 3 - Canone all'Unisono



11

13

15

Variatio 4

13

24

Variatio 5

8

17

25

## Variatio 6 - Canone alla Seconda

Musical score for Variatio 6 - Canone alla Seconda, Cello part. The score is written in bass clef, key of D major (one sharp), and 3/8 time. It consists of five staves of music. The first staff begins with a repeat sign. The second staff contains measures 6-11. The third staff contains measures 12-17, with a first ending bracket over measures 15-17. The fourth staff contains measures 18-23, with a second ending bracket over measures 18-23. The fifth staff contains measures 24-30, with a first ending bracket over measures 27-30 and a second ending bracket over measures 30-31. The piece concludes with a double bar line.

## Variatio 7 - al tempo di giga - TACET

## Variatio 8

Musical score for Variatio 8, Cello part. The score is written in bass clef, key of D major (one sharp), and 3/4 time. It consists of five staves of music. The first staff contains measures 1-3. The second staff contains measures 4-7. The third staff contains measures 8-11, with a first ending bracket over measures 10-11. The fourth staff contains measures 12-16, with a second ending bracket over measures 15-16. The fifth staff contains measures 17-20, with a first ending bracket over measures 17-18 and a second ending bracket over measures 19-20. The piece concludes with a double bar line.

20

23

26

29

Variatio 9 - Canone alla Terza

4

7

9

12

15



6

11

15

19

23

26

29

Variatio 13

7

14

21

27

Variatio 14

First staff of music for Variatio 14, starting with a treble clef, a key signature of one sharp (F#), and a 3/4 time signature. It begins with a whole note G2, followed by quarter notes A2, B2, and C3. The melody continues with eighth and sixteenth notes, including a trill over a dotted quarter note.

Second staff of music for Variatio 14, starting at measure 8. It features a series of eighth notes and sixteenth notes, with a trill over a dotted quarter note in the second measure.

Third staff of music for Variatio 14, starting at measure 13. It contains a complex rhythmic pattern with many sixteenth notes and a repeat sign at the end of the staff.

Fourth staff of music for Variatio 14, starting at measure 18. It begins with a trill over a dotted quarter note, followed by a series of eighth notes and sixteenth notes.

Fifth staff of music for Variatio 14, starting at measure 24. It features a continuous stream of sixteenth notes with a complex rhythmic pattern.

Sixth staff of music for Variatio 14, starting at measure 28. It begins with a double bar line and a fermata over a whole note, followed by a series of eighth notes and sixteenth notes.

Variatio 15 - Canone alla Quinta - Andante

First staff of music for Variatio 15, starting with a treble clef, a key signature of two flats (Bb, Eb), and a 2/4 time signature. It begins with a quarter note G2, followed by quarter notes A2, Bb2, and C3.

Second staff of music for Variatio 15, starting at measure 5. It features a series of eighth notes and sixteenth notes with a complex rhythmic pattern.

Third staff of music for Variatio 15, starting at measure 10. It contains a complex rhythmic pattern with many sixteenth notes.

Fourth staff of music for Variatio 15, starting at measure 15. It features a series of eighth notes and sixteenth notes with a complex rhythmic pattern.

Fifth staff of music for Variatio 15, starting at measure 20. It features a series of eighth notes and sixteenth notes with a complex rhythmic pattern.

24



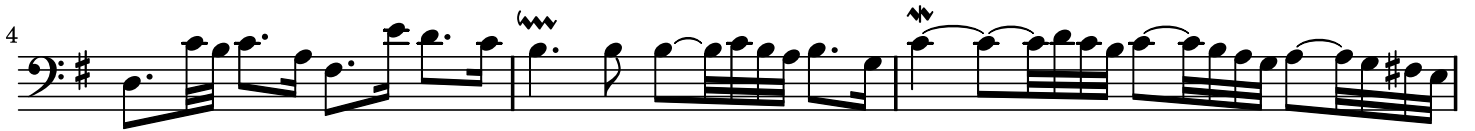
29



Variatio 16 - Overture



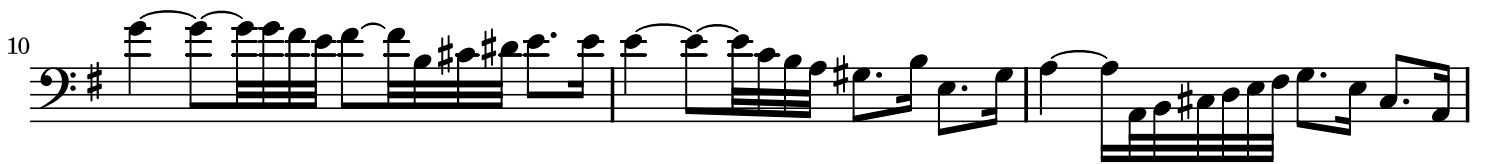
4



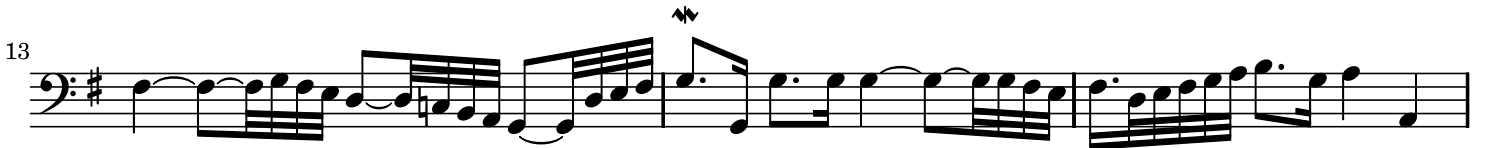
7



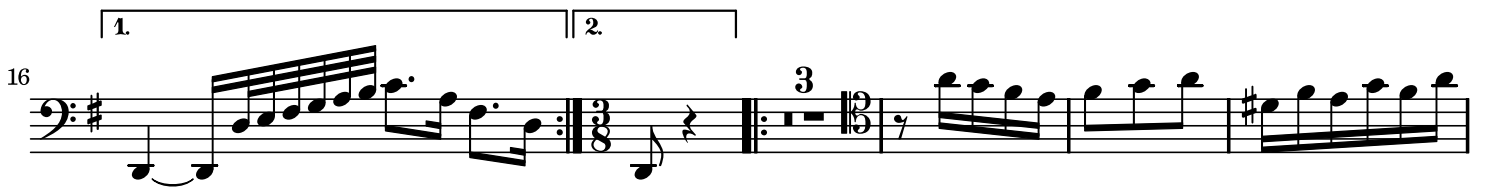
10



13



16



24



31



38



44



Variatio 17

First staff of music for Variatio 17, starting at measure 1. It features a bass clef, a key signature of one sharp (F#), and a 3/4 time signature. The melody consists of eighth and sixteenth notes, ending with a fermata and a measure rest marked with the number 4.

Second staff of music for Variatio 17, starting at measure 7. It continues the melodic line with eighth and sixteenth notes, ending with a fermata and a measure rest marked with the number 5.

Third staff of music for Variatio 17, starting at measure 15. It includes a repeat sign and a first ending bracket, concluding with a fermata and a measure rest marked with the number 4.

Fourth staff of music for Variatio 17, starting at measure 18. The melody continues with eighth and sixteenth notes, ending with a fermata and a measure rest marked with the number 2.

Fifth staff of music for Variatio 17, starting at measure 21. This staff features a dense texture of sixteenth-note chords and runs, ending with a fermata and a measure rest marked with the number 3.

Sixth staff of music for Variatio 17, starting at measure 24. It continues the sixteenth-note texture, ending with a fermata and a measure rest marked with the number 3.

Seventh staff of music for Variatio 17, starting at measure 30. The piece concludes with a final cadence, a fermata, and a double bar line.

Variatio 18 - Canone alla Sexta

First staff of music for Variatio 18, starting at measure 1. It features a bass clef, a key signature of one sharp (F#), and a common time signature. The melody is a simple eighth-note canon, ending with a fermata and a measure rest marked with the number 2.

Second staff of music for Variatio 18, starting at measure 6. It continues the eighth-note canon, ending with a fermata and a measure rest marked with the number 2.

Third staff of music for Variatio 18, starting at measure 12. The piece concludes with a final cadence, a fermata, and a double bar line.

Fourth staff of music for Variatio 18, starting at measure 17. It continues the eighth-note canon, ending with a fermata and a measure rest marked with the number 2.

Fifth staff of music for Variatio 18, starting at measure 22. This staff features a dense texture of sixteenth-note chords and runs, ending with a fermata and a measure rest marked with the number 2.

27



Variatio 19



9



16



25



Variatio 20



6



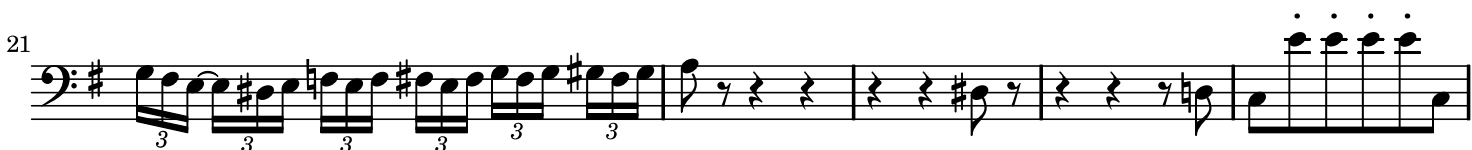
11



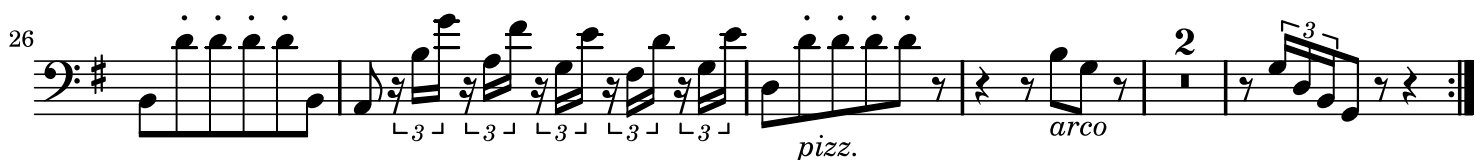
16



21



26



Variatio 21 - Canone alla Settima

Musical score for Variatio 21 - Canone alla Settima, Cello. The score is written in bass clef with a key signature of one flat (B-flat) and a common time signature (C). It consists of six staves of music, with measure numbers 4, 7, 9, 12, and 15 indicated at the beginning of their respective staves. The music features a complex rhythmic pattern with many sixteenth and thirty-second notes, and includes repeat signs at the end of the first and fifth staves.

Variatio 22 - alla breve

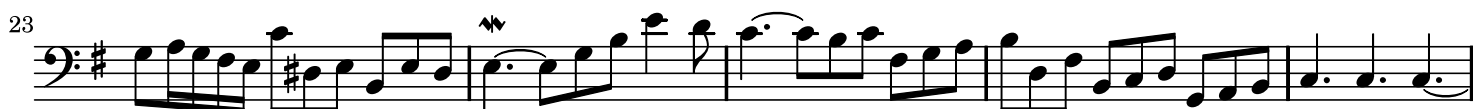
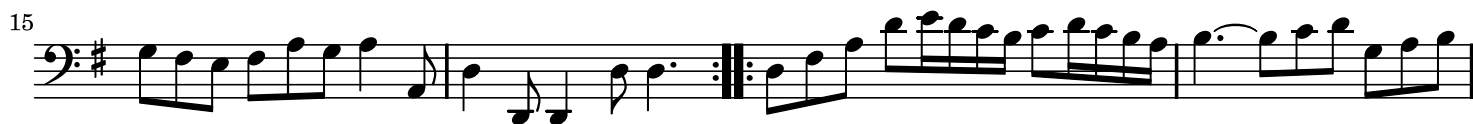
Musical score for Variatio 22 - alla breve, Cello. The score is written in bass clef with a key signature of one sharp (F#) and a 2/4 time signature. It consists of three staves of music, with measure numbers 9 and 16 indicated at the beginning of their respective staves. The music is characterized by a slower, more melodic line with some triplets and repeat signs.

Variatio 23

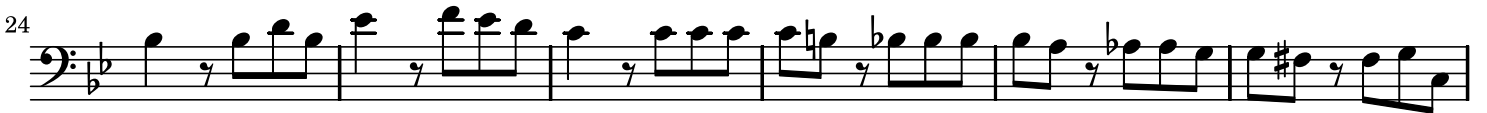
Musical score for Variatio 23, Cello. The score is written in bass clef with a key signature of one sharp (F#) and a 3/4 time signature. It consists of two staves of music, with measure numbers 9 and 12 indicated at the beginning of their respective staves. The music features a complex rhythmic pattern with many sixteenth and thirty-second notes, and includes repeat signs.



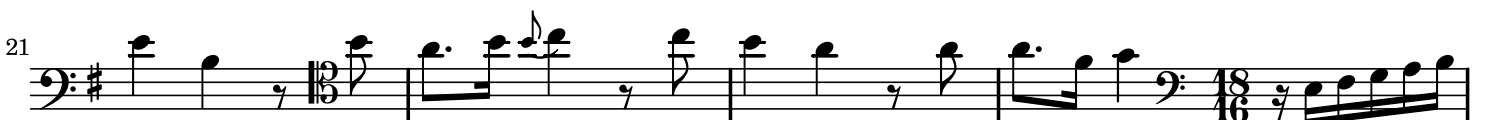
## Variatio 24 - Canone all'Ottava



Variatio 25 - Adagio



Variatio 26



25



27



29



31



Musical notation for measures 25-32, featuring a cello part in G major (one sharp) and 6/8 time. The notation includes various rhythmic patterns such as eighth and sixteenth notes, and rests.

## Variatio 27 - Canone alla Nona



4



8



12



15



19



23



26



30



Musical notation for measures 1-32 of 'Variatio 27 - Canone alla Nona'. The notation is in G major (one sharp) and 6/8 time. It features a cello part with various rhythmic patterns, including eighth and sixteenth notes, and rests. The piece concludes with a double bar line and repeat dots.

Variatio 28

*pizz.*

5

*arco* *pizz.* *arco* *pizz.*

12

*arco*

15

*pizz.*

19

*arco*

22

*arco*

24

*arco*

29

*pizz.* *arco*

Variatio 29

*arco*

4

*arco*

7

*3*

13

*3*

16



22

26

Detailed description: This block contains five staves of musical notation. The first staff (measures 16-21) features a series of triplet eighth notes. The second staff (measures 22-25) continues with similar rhythmic patterns. The third staff (measures 26-27) includes a triplet of eighth notes and ends with a double bar line.

## Variatio 30 - Quodlibet



5

13

Detailed description: This section consists of three staves of musical notation. The first staff (measures 1-4) begins with a common time signature and includes a fermata. The second staff (measures 5-12) contains a sequence of eighth and sixteenth notes. The third staff (measures 13-14) concludes the section with a double bar line.

## Aria da capo



10

19

27

Detailed description: This section consists of four staves of musical notation. The first staff (measures 1-9) is in 3/4 time and features a melodic line with a fermata. The second staff (measures 10-18) continues the melody. The third staff (measures 19-26) includes a sequence of eighth notes. The fourth staff (measures 27-30) concludes the section with a double bar line.

Fine